

## Summary Information

Consumers Energy Company is issuing a request for proposals (RFP) from bidders interested in acquiring all or part of its fleet of thirteen hydroelectric generating facilities located in Michigan. The fleet has a total nameplate capacity of 131.58 MWs, generating on average 439,462 MWhs per year giving the fleet a capacity factor of 38.1%. Eleven of the thirteen facilities have FERC licenses expiring in 2034, one in 2040 and one in 2041. The Ludington Pumped Storage facility is not included in this RFP. The fleet is serviced by the CEC hydro team composed of 48 personnel spread across the state.

The portfolio comes with significant real estate; over 32,000 acres are contained within the FERC boundaries of the projects. Approximately 17,000 acres compose the bottom lands for the various reservoirs and the balance of 15,000 acres is dry land. All equipment and items necessary to operate the facilities are included in the contemplated sale.

## Summary Project Information

	Facility Name	River	NP (MW)	Ann Gen (MWhs)	# of Units	COD	FERC License #	License Expiry	Hazard	CP NODE
1	Alcona	Au Sable	8.00	29,782	2	1924	2447	06/30/34	High	CONS.ALCONA
2	Calkins Bridge	Kalamazoo	2.55	13,073	3	1936	785	03/31/40	Low	BTM
3	Cooke	Au Sable	7.50	28,180	3	1911	2450	06/30/34	High	BTM
4	Croton	Muskegon	9.00	31,144	4	1907	2468	06/30/34	High	CONS.CROTON
5	Five Channels	Au Sable	6.00	24,534	2	1912	2453	06/30/34	High	BTM
6	Foote	Au Sable	9.00	30,949	3	1918	2436	06/30/34	High	BTM
7	Hardy	Muskegon	32.50	103,680	3	1931	2452	06/30/34	High	CONS.HARDY
8	Hodenpyl	Manistee	18.00	47,616	2	1925	2599	06/30/34	High	CONS.HODENPYL
9	Loud	Au Sable	4.00	17,997	2	1913	2449	06/30/34	High	BTM
10	Mio	Au Sable	5.00	15,547	2	1916	2448	06/30/34	High	BTM
11	Rogers	Muskegon	6.72	23,070	4	1905	2451	06/30/34	High	BTM
12	Tippy	Manistee	20.01	62,367	3	1918	2580	06/30/34	High	CONS.TIPPY
13	Webber	Grand	3.30	11,523	2	1907	2566	05/31/41	High	BTM
<b>Total</b>			<b>131.58</b>	<b>439,462</b>						

Consumers will offer a 30-year PPA on the facilities. The RFP will open February 15, 2024. Interested parties are encouraged to contact the RFP Manager to execute an NDA with Consumers and enroll in the event.

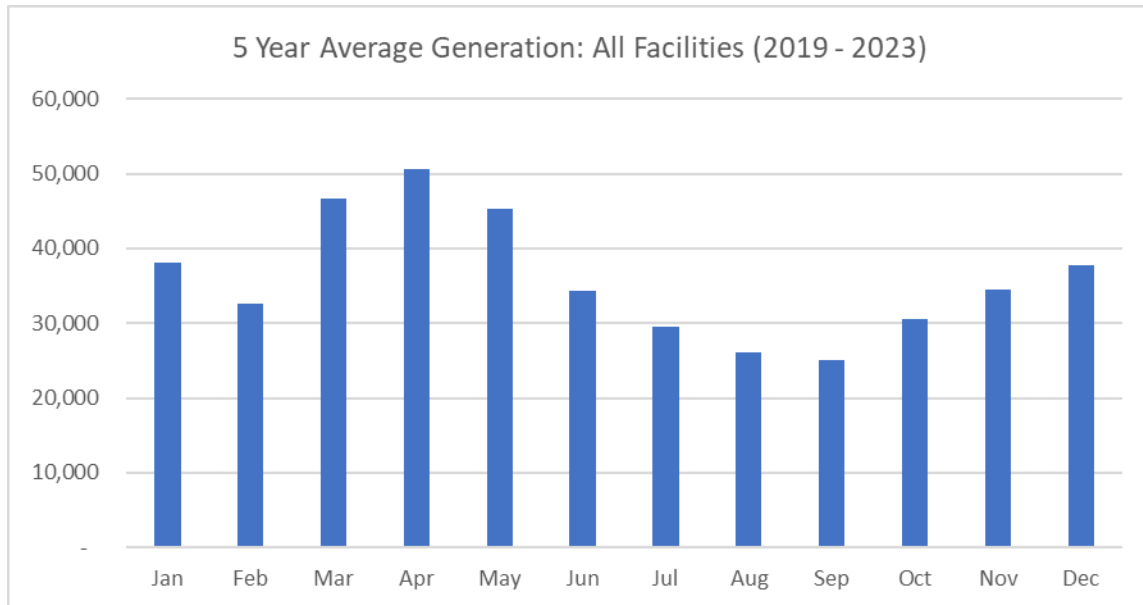
**RFP Manager:** Clear Energy Brokerage & Consulting, LLC  
 Ryan Cook  
 E-mail: [ryan.cook@clearenergybrokerage.com](mailto:ryan.cook@clearenergybrokerage.com)  
 Phone: 616.528.4682

## Summary Generation

### All Plants

	Jan	Feb	Mar	Apr	May	Jun	Jul	Aug	Sep	Oct	Nov	Dec	Total
<b>2013</b>	35,769	37,458	42,478	67,234	54,625	38,604	28,592	23,441	22,571	27,229	37,506	32,448	<b>447,956</b>
<b>2014</b>	31,016	26,276	30,635	64,926	56,612	36,982	35,135	30,303	32,898	32,456	36,466	43,202	<b>456,907</b>
<b>2015</b>	34,367	25,243	38,912	43,752	40,905	40,774	28,048	29,108	31,566	27,250	35,605	44,689	<b>420,219</b>
<b>2016</b>	40,325	36,169	57,941	59,776	45,317	32,638	29,080	26,088	25,219	32,513	30,223	34,621	<b>449,911</b>
<b>2017</b>	42,290	41,606	53,881	60,438	47,372	36,832	30,477	26,218	22,388	28,294	35,258	32,547	<b>457,601</b>
<b>2018</b>	38,024	37,826	43,183	53,666	52,524	32,220	26,537	26,007	26,863	34,264	34,873	37,896	<b>443,883</b>
<b>2019</b>	34,194	35,570	51,146	62,735	55,280	49,672	36,568	28,411	31,507	39,104	42,813	46,465	<b>513,464</b>
<b>2020</b>	52,525	38,578	53,043	49,101	59,782	42,109	32,813	28,184	26,005	30,970	35,007	34,959	<b>483,075</b>
<b>2021</b>	36,648	29,892	41,825	31,445	33,360	26,038	28,503	30,138	28,122	33,059	35,941	44,819	<b>399,789</b>
<b>2022</b>	32,935	28,443	46,421	62,022	42,974	29,100	23,068	20,633	16,905	24,439	27,660	29,877	<b>384,475</b>
<b>2023</b>	34,087	30,995	40,906	48,205	35,157	25,086	26,367	23,167	23,130	25,437	31,413	32,847	<b>376,796</b>
<b>Average:</b>	<b>37,471</b>	<b>33,460</b>	<b>45,488</b>	<b>54,846</b>	<b>47,628</b>	<b>35,459</b>	<b>29,563</b>	<b>26,518</b>	<b>26,107</b>	<b>30,456</b>	<b>34,797</b>	<b>37,670</b>	<b>439,461</b>
<b>5 Yr Avg:</b>	<b>38,078</b>	<b>32,695</b>	<b>46,668</b>	<b>50,702</b>	<b>45,311</b>	<b>34,401</b>	<b>29,464</b>	<b>26,107</b>	<b>25,134</b>	<b>30,602</b>	<b>34,567</b>	<b>37,793</b>	<b>431,520</b>

The exceptionally maintained fleet of hydro facilities has performed consistently, averaging a 38% capacity factor over the last eleven years, with a high of 45% and a low of 33%.



For more information from Consumers Energy, visit [ConsumersEnergy.com/hydrofuture](https://ConsumersEnergy.com/hydrofuture)